



IT'S TIME TO JOIN THE FRIENDS

Volume I, Issue I

October, 2002

Sad News

The Calhoun County Historical Commission lost two of their commission members this past year. Linda Whetstone who lived in St. Matthews served on our board for 17 years. Lu Ann Smith from the Sandy Run area served for 2 years. Both of these women were outstanding and played a positive role in our museum's success. They were loved by many and will be missed by the museum and the community. Our hearts and prayers go out to their families.

Please see story about The Calhoun County Museum in middle section. This was reprinted with permission from the *Sandlapper Magazine*, August 2002. *Sandlapper* covers interesting stories about S.C. To find out more about *Sandlapper* please call 803-359-9954 or you may write them at P.O. Box 1108 Lexington, S.C. 29071

VOLUNTEERS NEEDED

When our building is completed we will need some extra hands to help serve the public. If you are willing to lend a hand, please let us know. We are looking for people who have knowledge for local and state history, artists, and lots more. If you have the time and would be willing to help us out, please give us a call. 803-874-3964

Special points of interest:

The Museum helps many community programs. Last year the museum was a sponsor for the following programs and helped pay for many events:

Mother Goose—Held at the Calhoun County Library
First Steps Program—Calhoun County Schools
Dance Therapy—Calhoun County Convalescent Center
Calhoun Players—CC High School, Cameron Auditorium
Chamber of Commerce—Purple Martin Festival
Clemson Extension—Art Expression Camp
Cameron Community Club—Cameron
Fort Motte Community Center—Fort Motte
Calhoun County Disabilities—L. Marion Gressette Center
School Programs—Calhoun County Schools
Local and State Artists—Calhoun County Gift Shop
Dr. Walter Edgar, Southern Studies—C.C. Museum
S.C. Arts Com. who receives funding from the N.E.A.



Museum Wish List

Old Phones and Phone Books
Old Wide Boards
1930's Refrigerator
1930's kitchen stuff
1900-1940 wall calendars
Artist works
Old Photographs
Woodworkers

Museum Archives is closed to the public until renovations are completed. Call us with your questions.

TERRY YOUNG FEATURED ARTIST—FALL 2003

Mrs. Terry Young, a local artist, is busy painting local scenes of Calhoun County's yesterday. Several of her paintings will be made into prints and will be for sale along with her original works at our 2003 Fall Gala. If you have some interesting old pictures of Calhoun County and would be willing to share them, please give us a call. We will be glad to make a copy for her and return your pictures right away.

EXCUSE OUR MESS: BUILDING IS IN PROGRESS

The museum addition and remodeling is going real well. Parts of our museum are getting a face lift so some sections have been closed off. We think you will be pleased with the end results.

We will be glad to show you what we are doing; just come on in but please excuse the chaos. The construction will be completed by next spring, then it will take us several months to get things back in place. Plans are being made now for the fall of 2003 to hold a gala. As soon as we have a date set, we will fill you in.



Article & Photos
By Daniel E. Harmon

In 1959, a woman with a certifiable passion for Calhoun County history "starting collecting," as her daughter remembers it. The county Historical Society kept a single small room containing a few artifacts and documents behind the library in St. Matthews. To Jean Ulmer and other avid history buffs, it hardly did justice to the county's forebears and their legacy. Ulmer realized much, much more deserved public preservation. She knew people who might be willing to donate some of their keepsakes for posterity, if a prominent facility existed to receive and display them.

Ulmer instilled the importance of studying the past in her daughter, taking her along on countless genealogical and site-seeing forays. "When I was a child," says Debbie Roland, "we went to picnics and cemeteries. I didn't know people went to parks. She had me recording information off tombstones."

Ulmer's hope was to someday have a museum in which Calhoun County citizens could take pride, and from which they could learn. "She didn't see any reason why children growing up in a small community shouldn't have exposure to a cultural museum just like children in a city," Roland reflects.

By 1976, the little room was overflowing. The historical society established a bonafide museum in a former pecan factory building on Butler Street. Ulmer was its director—to be succeeded in 1983 by her daughter. Since then, the museum has grown by remarkable bounds. It is, among other credits, one of the state's invaluable archives of rural South Carolina life since the Civil War. The museum won the state's Elizabeth O'Neill Verner Award in 1995.

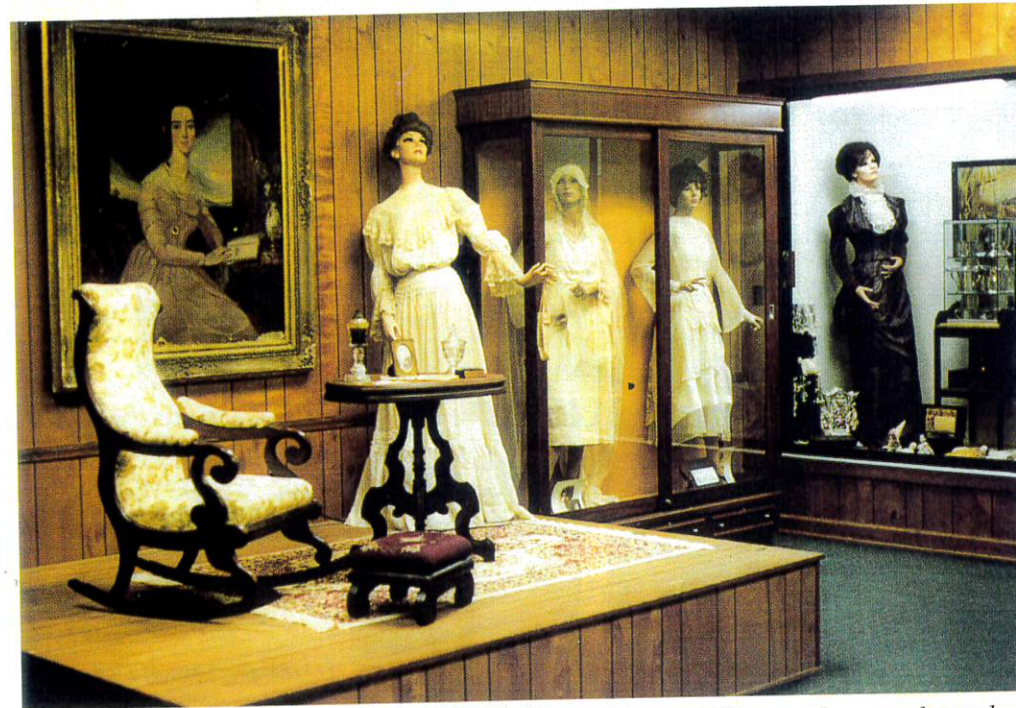
"We started here with 5,000 square feet of usable space," Roland



MUSEUM WITH A MISSION

The Calhoun County Museum was shaped on an inspiring principle: Everyone—no matter who they are or where they live—has a place in history.

Period clothes (above and top of next page) of all types are among the Calhoun County Museum's most popular displays. Below, museum director Debbie Roland discusses the wood used to build an antique pump organ.



Women of means dressed elegantly for weddings and other special occasions a century ago. Left: a gargantuan desk/linen press used by the famous "Swamp Fox," Francis Marion.



recounts. "We added 6,000 square feet in 1985, and we're in the process of constructing 7,000 square feet more." Scheduled to open next spring, the new area will include a small stage for children's plays, book readings and other educational programs.

Roland is especially proud that the museum's phenomenal growth has been achieved without tax burdens. It's all been paid for with donations and grants.

You're free to roam the rooms and examine the exhibits on your own, but a guided tour by Roland is well worth requesting. With a Mark Twain sense of humor, she makes bygone days real again. She does it with amusing, poignant and tragic stories, and descriptions of everyday items—chamber pots, vintage toys, fly-catching jars—that might be missed by a visitor who's never seen them. She also apprises

guests of interesting Calhoun County information little known to outsiders. For example, St. Matthews is the highest point between Charleston and Little Mountain—an item not lost on early railroad engineers. The horse that won the 2002 Kentucky Derby was raised in Calhoun County, which also prides itself as "Home of the Purple Martin."

Exhibits are varied: large and small antiques, military uniforms worn by Calhoun County veterans in several 20th-Century conflicts, Native American objects and information, ordinary household items from a century ago and impressive art and silver collections. Plan on a long visit—better yet, several return trips—if you intend to take it all in.

School and church groups frequent the facility. Children learn to shag, line-dance and do the Charleston. Educational programs include slide shows, film festivals, and presentations of local artists and their work. Meanwhile, the museum draws genealogical researchers from all over America and abroad.

Roland and company also are involved in outreach programs at schools, at a convalescent center and in conjunction with the Clemson University Extension Service. A five-year project has been the videotaping of Calhoun County veterans. "The stories they have to tell are stories you don't read in history books," Roland says. "Calhoun County is going to be very different 30 years from now, and if we don't capture these things while we can, they'll be lost."

Roland says the museum's mission is essentially the same as the one her mother launched more than 40 years ago: "to make every child feel that they have a place in the history of tomorrow." ♦

The Calhoun County Museum is at 303 Butler Street in St. Matthews; (803) 874-3964; www.insl.com/calhoun. Open Monday–Friday, 9 a.m.–4 p.m. No admission fee.

Below is a sampling of our gift shop's offerings



JOIN THE CALHOUN COUNTY MUSEUM & CULTURAL CENTER FRIENDS TODAY

EXTRA! EXTRA!

All Memberships expired on September 30, 2002. Don't miss out on an exciting year. Renew your membership today. Please make sure you send us your new mailing address. Your name will be deleted from our list if we don't hear from you.

Yes I want to share in the activities of the Calhoun County Museum and Cultural Center. Please enroll me as a **FRIEND** of the museum! (see below for enrollment form)

\$35 - Individual ; \$55 - Family ; \$100 - Patron

\$500 - Corporate Sponsor ; \$1000 - Benefactor

_____ C. F. Ulmer Endowment Fund

_____ Darrell Cooper Memorial Fund

Donations to Friends of the Calhoun County Museum and Cultural Center are tax deductible.

Good friendships are meant to grow and be shared. Help the Calhoun County Museum and Cultural Center to make new friends by telling your friends about us!!!

Cut off and return to the museum OR mail to the below address

The Calhoun County Museum
313 Butler Street
St. Matthews, S. C. 29135

Friends Plan _____ Amount _____

Name _____

Address _____

City _____

State _____ Zip _____

All programs are supported in part by the S.C. Arts Commission, which receives funding from the NEA.